

**MULTI**  
**WAL**

# Select Moveable Walls





City Hall Hengelo, Overijssel

# Always flexible with **Multi Electric**

## **Multi Electric, precise and dynamic**

Crank starting a car engine was once a standard practice from a bygone era. What was then perceived a normal activity now appears almost laughable and more suited to black and white news-reels. Everything changed when the automatic starter motor was invented.

Cranks and levers still have their place in engineering and it became the industry standard to use strength and technique to manually operate the seals for moveable walls. Until Multiwal designed and developed the Multi Electric: a unique system that automatically extends the top and bottom acoustic seals to the correct position.

Someday the Multi Electric system will be commonplace and 'someday' is sooner than you might think. Multiwal is already delivering their type Select and Commandoor as standard with the Multi Electric system without any added costs. With Multiwal no one has to tolerate outdated technology.

Multiwal moveable walls are perfect for making flexible use of the available room space. The Multi Electric operating system has now made these walls even more customer-friendly, allowing you to open/close the Multiwal moveable wall in seconds.

The secret of Multi Electric is the ingenious design of the electrically driven top and bottom pressure seals. This offers a great improvement on traditional moveable walls, as opening and closing the walls by hand is a time-consuming and unpredictable activity.

## **For your comfort and convenience**

The specially developed Multi Electric system makes it possible to open and close Multiwal moveable walls with the minimum of effort. The electrically operated pressure seals guarantee a tight closure of the panels and ensure the best possible sound insulation.

## **Advantages of Multi Electric**

- Feather light operation
- Optimum customer-friendliness
- Guaranteed sound insulation
- Super fast opening and closing
- Plug & Play
- Vastly superior fire and smoke barrier

Look at the video on [www.multiwal.co.uk](http://www.multiwal.co.uk) and discover the simplicity of Multiwal's Multi Electric.



# With respect for **historic buildings**

Beautiful historical buildings are revitalised. The remarkable Veemarkthallen market buildings designed by Den Bosch architecture and built in 1931 were given the ultimate 'makeover' and transformed into a magnificent conference centre.

The architect designed magnificent conference rooms in this historical building without diminishing the important period features. The traditional design is perfectly complimented by the new technology of Multiwal's Multi Electric moveable walls.

## **Acoustic walls in every finish**

It is possible to add finishing touches to the walls with special acoustic panels. These panels can be finished with both synthetic material and wood veneer. The level of sound absorption of the acoustic panels depends on the perforation method and the surface area of the wall. A large number of options are possible.

## **Beautiful design**

Ingenious Multiwal moveable walls provide the architect with creative freedom, making it possible to combine numerous panel types and finishes. In addition to superb acoustic performance, aesthetically pleasing new areas and spaces can be created.





Dorint hotel Eindhoven

# Unlimited creative freedom

## Outer beauty, inner strength

Multiwall moveable walls are aesthetically appealing and rock-solid once they are positioned. They are secured between the ceiling tracks and the floor using telescopic pressure seals with a flexible twin contact face, assuring optimal sound insulation.

The rigidity and the stability of the moveable walls are guaranteed using a strong construction, consisting of a steel inner frame with vertical aluminium profiles. The sophisticated track systems and noiseless bearing rollers ensure that very little effort is required to move and park the panels.

One large hall or several conference rooms? Multiwall moveable walls make your space flexible and multifunctional.

Multiwall moveable walls blend seamlessly with the space they occupy. Thanks to a cleverly designed track system, the walls can be parked sideways and out of sight.



# Wide range of materials and colours

Traditional or cutting edge: Multiwal moveable walls are available in countless designs, colours and materials from top-quality high-grade veneer to fabric or synthetic material.

Exclusive panel-work is also possible and if required, even with windows, frames and mirrors. Should you require a bespoke design, it can be submitted to us and we will make sure that the Multiwal moveable wall becomes harmoniously integrated with your organisation's image and corporate identity.



Equipe Zwolle





## A unique piece of technology in **Rotterdam Ahoy**

Ahoy has been a loyal Multiwal customer for years. And that is not without a reason. Multiwal produced unique moveable walls especially for the existing Ahoy conference center. The new roof construction of the Ahoy complex is characterized by extremely wide cantilevered spans, the new roof is extremely strong whilst at the same time remaining flexible. Extremes of weather including high winds and heavy snow fall mean the roof can deflect up and down by up to 70mm. In order to guarantee the functionality of the Multiwal moveable walls with these extremes of movement, Multiwal designed and manufactured moveable walls with special elements incorporating heavy duty gas struts, ensuring the elements can cope comfortably with the movements of the roof. In combination with the ease of use of the Multiwal Multi Electric system, these moveable walls can now always be operated easily and without interference. Rotterdam Ahoy can thus create several large and even extremely large spaces for its wide range of events.



Ahoy Rotterdam



Visuals: Kraaijvanger



# Flexibility at its best

Rotterdam Ahoy is well known to many. Thanks to the custom-made interior walls, Ahoy can now respond optimally and flexibly to the various activities that take place there. One large room or several smaller rooms. Various arrangements can be realized in an instant.

## Facts & Figures

In addition to the moveable walls in the existing conference center, two of which are no less than 100 meters wide, Multiwal was also asked to install panel walls in the brand new ICC building. Fifteen moveable walls of 7 meters high. The 250 elements supplied, of a total of 600 meters, make it possible to create more than 35 different set-ups in an instant. Flexibility at its best.

## Ease of operation

The walls can be opened without difficulty thanks to the ingenious Multi Electric system. And when they are closed again, they are stuck. They are clamped firmly between the ceiling tracks and the floor by the extendable pressure beams. Thanks to the double elastic sealing rubbers, Multiwal also guarantees optimal sound insulation.

We are proud that we were able to realize unique customization for Ahoy.





# Optimal functionality

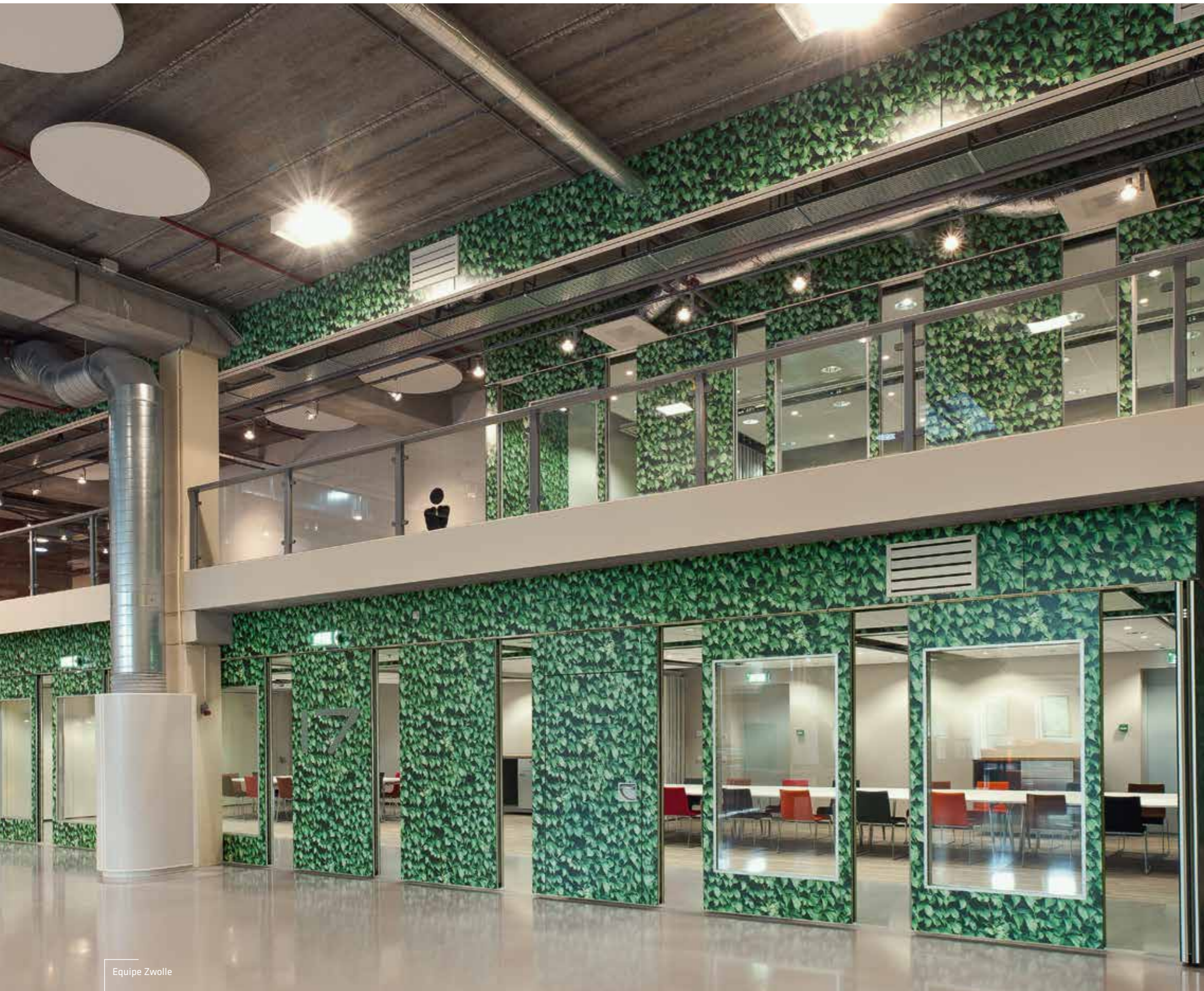
UArchitects, based in Eindhoven, designed this beautiful multifunctional school "The Lucky One" in Maastricht. The assignment to Multiwal was simple, do what we specialise in. In one large multifunctional room, we were asked to create the possibility of changing this large space into eight individual classrooms, whilst still maintaining complete transparency.

This project is a perfect example of how moveable folding walls can be used to support the Architects vision to provide functional, usable space, bringing together everything that moveable folding walls are designed to deliver. In addition to the basic elements, the design also included corner elements, doors and a number of elements with vision panels.

This results in optimum use of the spaces!







Equipe Zwolle

Efficient, **functional and Stylish**

**High quality** sound insulation

Competitively priced **top quality**

Available in **most designs**

Transparent and **safe**

Designed and manufactured **locally**

**Operating comfort**  
down to the finest detail

# Standard by Multiwal on the Select systems

Technical features	90U	100U	100K	110K	110U	120K	200K
Track profiles in RAL 9010	Standard	Standard	Standard	Standard	Standard	Standard	Standard
Ceiling support profile	Standard	Standard	Standard	Standard	Standard	Standard	Standard
Frame with vertical "tube" profiles	Standard	Standard	Standard	Standard	Standard	Standard	Standard
Vertical profiles anodized	Standard	Standard	Standard	Standard	Standard	Standard	Standard
Vertical profiles with magnetic closure, 70 N/m	Standard	Standard	Standard	Standard	Standard	Standard	Standard
Concealed vertical profiles	Not possible	Not possible	Standard	Standard	Not possible	Standard	Standard
Panel comprising vertical profiles	Standard	Standard	Not possible	Not possible	Standard	Not possible	Not possible
Semi automatic control "Multi Electric"	Optional	Standard	Standard	Standard	Standard	Standard	Standard
Manual operation using a crank handle	Standard	Standard	Standard	Standard	Standard	Standard	Standard
Seal pressure of manual operation 1500 N/m	Standard	Standard	Standard	Standard	Standard	Standard	Standard
Seal pressure semi automatic (adjustable) 2000 N/m	Standard	Standard	Standard	Standard	Standard	Standard	Standard
Stainless steel handles on doors	Standard	Standard	Standard	Standard	Standard	Standard	Standard
Interchangeable outer boards in hanging position	Standard	Standard	Standard	Standard	Standard	Standard	Standard

- Standard
- Optional
- Not possible

Technical features	90U	100U	100K	110K	110U	120K	200K
High-quality chipboard	Standard	Standard	Standard	Standard	Standard	Standard	Standard
Boards with 2 mm ABS edges	Not possible	Not possible	Standard	Standard	Not possible	Standard	Standard
Floor guidance not necessary (advised from 10 mtr)	Standard	Standard	Standard	Standard	Standard	Standard	Standard
No floor locking required for pass-through doors	Standard	Standard	Standard	Standard	Standard	Standard	Standard
TÜV tested	Standard	Standard	Standard	Standard	Standard	Standard	Standard
Sound insulation reports	Standard	Standard	Standard	Standard	Standard	Standard	Standard
Maximum dB value	51	53	53	57	57	59	59
Maximum element height, in meters	6	12	12	12	12	12	25
Standard maximum elementary width, in meters	1.26	1.26	1.26	1.26	1.26	1.26	1.26
Aluminum glass profiles	Optional	Standard	Standard	Optional	Optional	Optional	Optional
Vertical profiles in RAL colour	Optional	Optional	Optional	Optional	Optional	Optional	Optional
Moisture / fire resistant chipboard	Optional	Optional	Optional	Optional	Optional	Optional	Optional
30 and 60 min fire delay (with glass)	Optional	Optional	Optional	Optional	Optional	Optional	Optional
Glass vision panels in any shape	Optional	Optional	Optional	Optional	Optional	Optional	Optional

# Advantages of Multi Electric

## Certification

The Multi Electric system is certified according to the latest most stringent European legislation for optimal safety.

## Electronics

The microprocessor system guarantees an optimal compressive force of 2kN/m. This can be adjusted according to customer's requirements.

## Maintenance-free motors

The Multi Electric functions by means of high-quality maintenance-free motors, which are designed and manufactured using the latest technology. This electro-mechanical technology is also practiced by the motor vehicle industry and is used by some of the most notable manufacturers including Jaguar, Mercedes-Benz and Porsche.

## Emergency power supply

An integrated emergency battery can be provided as an option in the unlikely event of a power failure.

## Plug & Play

All electrical components are fully integrated within the wall components. The 24V operating system is compatible with either 110V or 230V power supply and only requires a localised electrical supply.

## Floor and track connections

Because of the excellent compressive force, there is no requirement for a floor track or panel locking bolt system. The Multi Electric system guarantees optimal wall panel connection thus ensuring high-quality sound insulation.

## Maximum safety

The telescopic panel is fitted with a 'dead-mans' push button control in accordance with international Health & Safety legislation. Multi Electric 'the fastest' Each motor needs only 3 seconds to extend the pressure seal at the top and bottom automatically.



Pressure seals extend automatically with Multi Electric



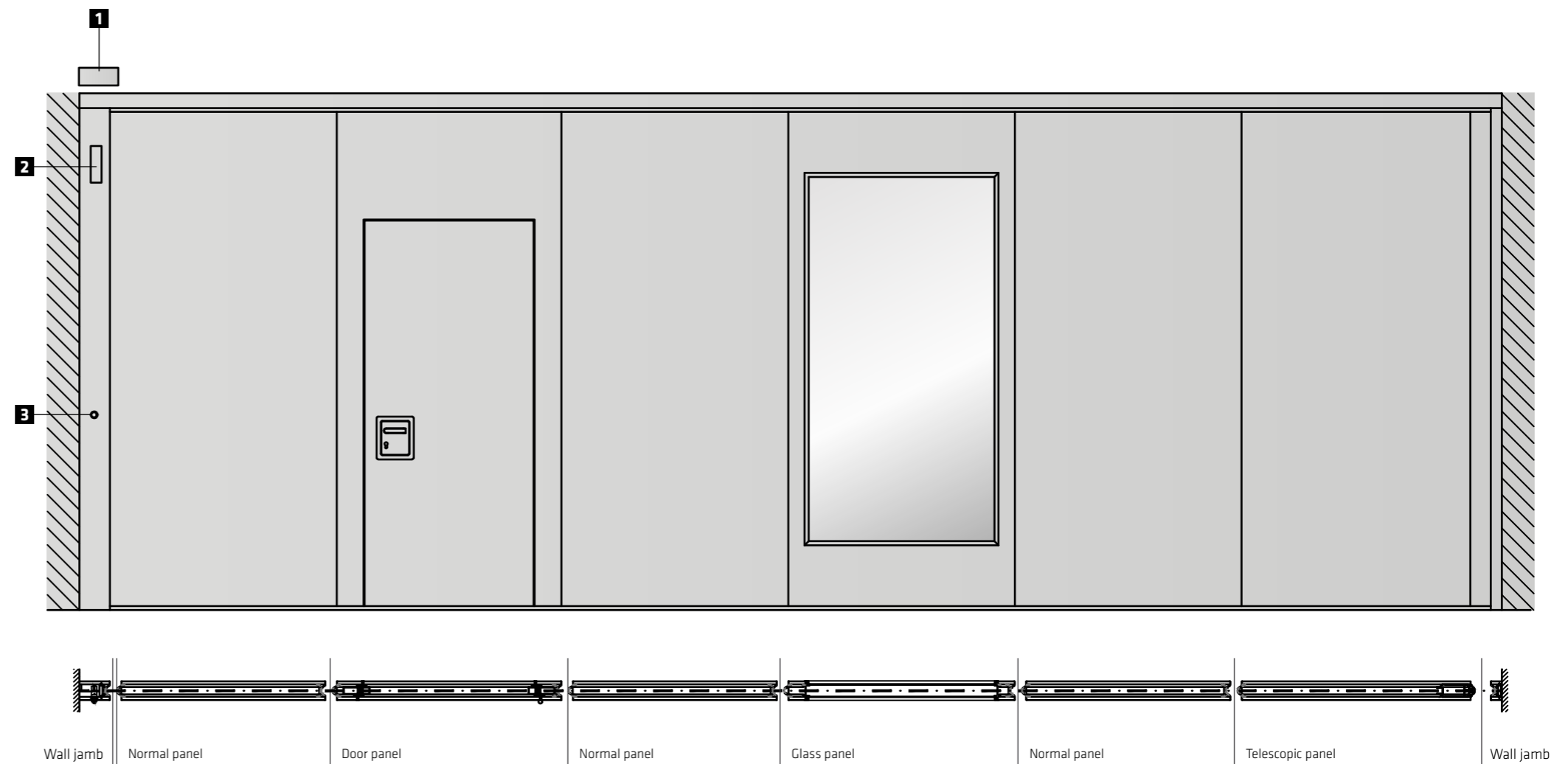
# Always High Quality

## For your comfort and convenience

Not only does the use of the Multi Electric system save a great deal of time but it ensures a perfect seal each and every time it is used compared with the traditional spindle system using a hand crank. The user-friendly operation simply requires the panels to be moved together with a minimum of pressure. Contacts designed especially for Multi Electric are then linked and a low voltage electrical connection is made between the panels and the integrated electronic control system does the rest.

## Safety first

The Multi Electric system is available in either a 110V or 230V version, with a special transformer (included) to convert the voltage to 24V, thus ensuring safety for the customer. The transformer is integrated into the wall jamb as standard or can be fitted in a position specified by the customer. An integrated key switch control is also included in the wall jamb. The key can be removed to prevent unauthorised use.



## Technical features

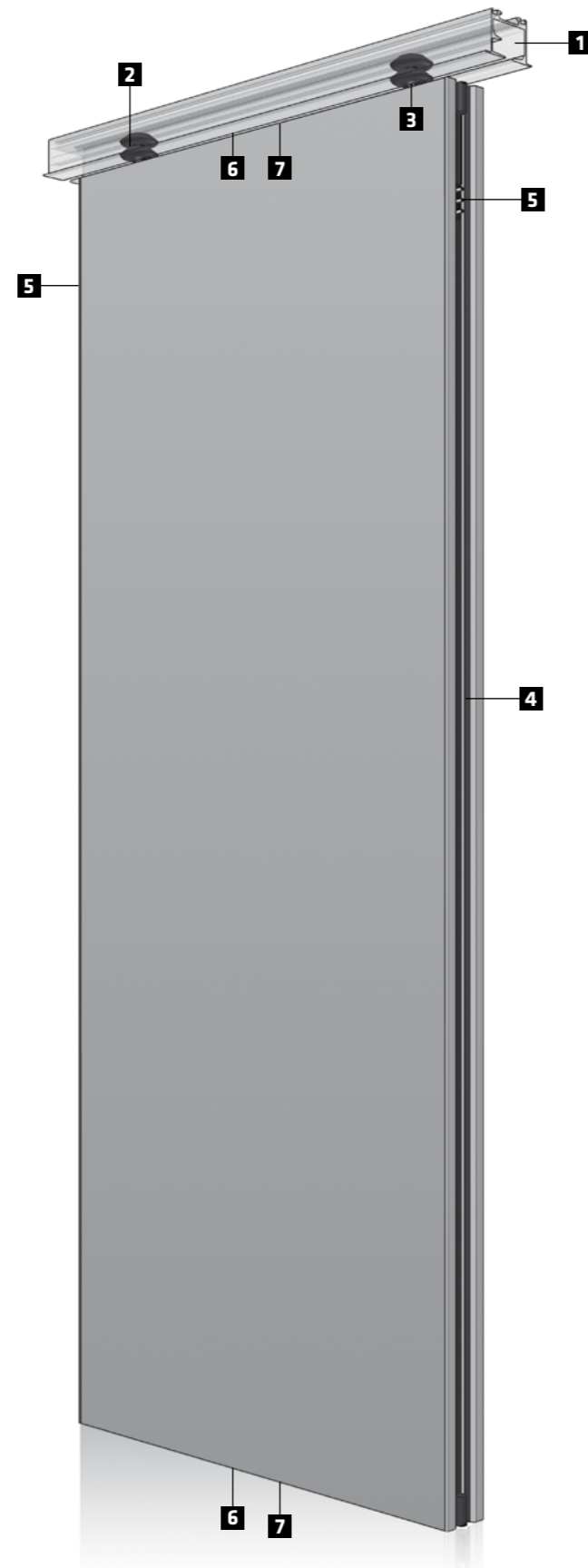
- 1** Optional emergency power supply
- 2** Integrated power supply in the wall jamb
- 3** Integrated key switch control



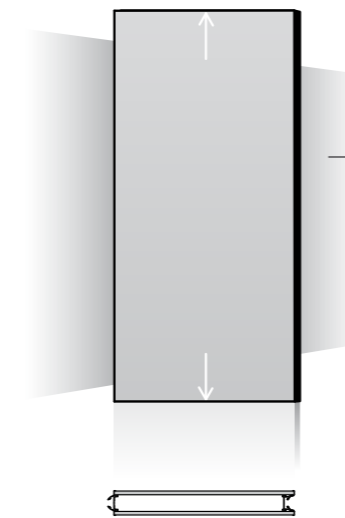
# The technical detail

## General features

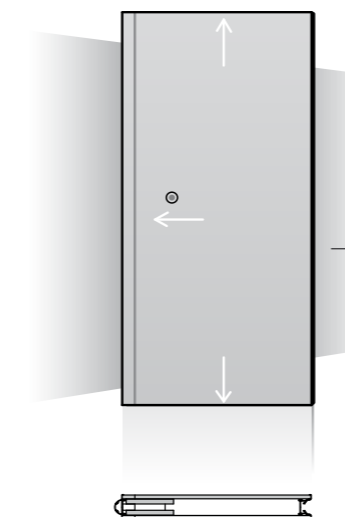
- 1 Track**  
Aluminium track in standard colour RAL 9010. All other colours are available upon request.
- 2 Running gear**  
Bearing rollers with high-quality roller technology have been specially developed for the Multiwal moveable walls. Combined with an ingenious aluminium track system, the panels can be easily moved.
- 3 Panel height adjustment**  
Panel height is fully adjustable without dismantling the main assembly. Disturbing the ceiling finish is not necessary to fine tune the panels.
- 4 Vertical interface**  
Concave/convex aluminium profiles guarantee that the seal is effective and insulates properly. The solid and precise connection between the panels is achieved by means of strong, full height magnetic strips and purpose made sound sealing strips located on the inner face.
- 5 Electrical contacts**  
Specially developed low voltage electrical contacts are housed in unique concave/convex aluminum profiles that guarantee ease of operation and an uninterrupted and safe electrical flow between the panels.
- 6 Horizontal closing**  
To obtain the best soundproofing effect, the wall must fit tightly against the floor and ceiling. To achieve this, the moveable walls have a Multi Electric system used to extend the pressure seals, which have flexible rubber pads. The pressure seals naturally compensate for possible unevenness in the floor.
- 7 Pressure seals**  
Each panel is fitted with black anodised pressure seals at the top and bottom. The compressive force of 2 kN/m can be tuned by the microprocessor.



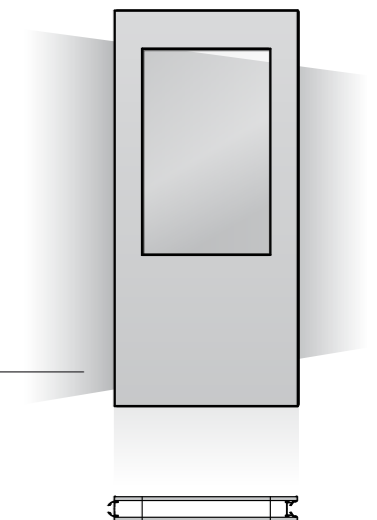
## Panel types



**NE Normal panel**  
Standard basic panel



**TEF Internal telescopic panel**  
Each wall is normally equipped with one telescopic panel. The panel is fitted with an internal moveable sleeve.

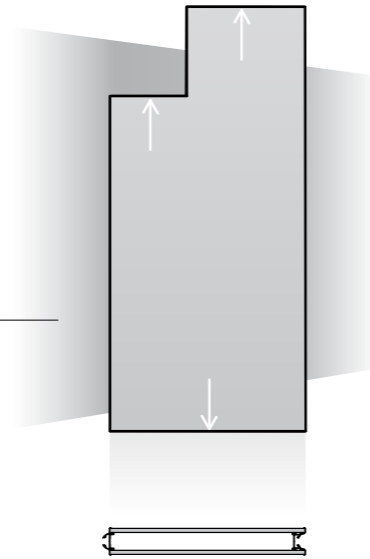


**FE Glass panel**  
All panels can be supplied with windows if required. Every conceivable configuration can be applied to the panels, giving the designer creative freedom.

EE/SE

**Corner panel or special panel**

Panels can be supplied with optional corner connections (EE), to facilitate the connection to other adjacent moveable walls. Limitless other special panels (SE) can also be supplied.



DT

**Pass through door panel (single door)**

This fully moveable pass door is constructed with a high-quality welded steel frame. This solid construction makes any type of floor track or locking mechanism redundant. The door is equipped with a pressure seal at the bottom, which extends automatically during the closing action of the door. During sliding of the pass door panel, the door will be secured automatically.



TEW

**Telescopic wall jamb**

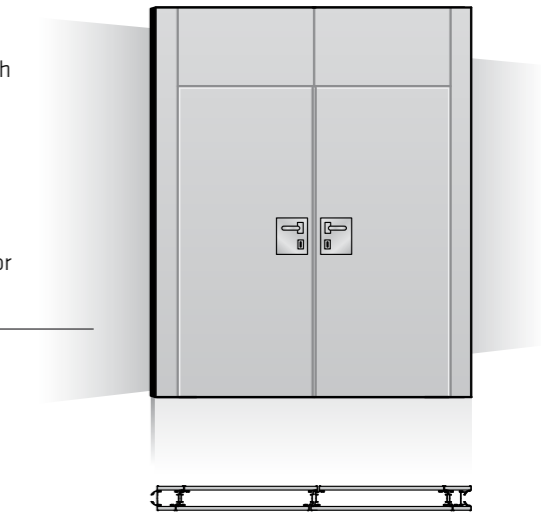
The Select 120 and the Commandoor is fitted as standard with a telescopic wall jamb. The Select 100 and 110 models can also be delivered with a telescopic wall jamb. The major advantage of this option is that all electrical components i.e. transformer, microprocessor and key switch for the Multi Electric are fully integrated within the assembly. The telescopic wall jamb has the same finish as the wall.



DTZ

**Pass through door panel (double doors)**

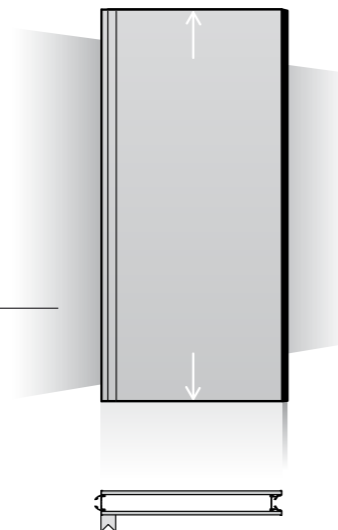
This fully moveable pass door is constructed with a high-quality welded steel frame. This solid construction makes any type of floor track or locking mechanism redundant. The door is equipped with a pressure seal at the bottom, which extends automatically during the closing action of the door. During sliding of the pass door panel, the door will be secured automatically.



EE

**corner panel**

All types of walls can be equipped with a standard 90° corner element. Other corner solutions are available as an optional extra.



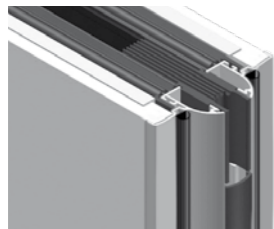
FT

**Fixed pass door**

The telescopic panel can be replaced by or used in conjunction with a fixed pass door. The pass door is full height and is fixed to one end of the existing building structure. The door is equipped with pressure seals at the top and bottom, which extend automatically during the closing action of the door.



## Element connections and technical characteristics



### Type Select 90U

#### Dimensions

- Element thickness 92 mm
- Maximum element width 1260 mm
- Maximum element height 6000 mm
- Special dimensions on request

#### Frame Construction

- Self-supporting aluminum / steel frame construction

#### Cover boards

- High-quality E1-quality chipboard, 12 mm, free-floating
- Optional*
- FSC, MDF, waterproof, fire retardant

#### Sound insulation laboratory value according to DIN and ISO 10140-2

- Sound insulation from 40 to 51 dB

#### Weights

- 34 - 45 kg / m<sup>2</sup>

#### Vertical profiles

- Conical clear anodized aluminum profiles
- With double inner rubber seal profiles and integrated magnetic strip

#### Vertical connection between elements

- Type U: With wall closed, approx 5mm visible aluminum profiles

#### Horizontal connection against head track and finished floor

- Black anodized aluminum pressure bars with double rubbers to compensate for uneven floor surface

#### Fire rating

- Fire rated boards

#### Pass doors

- Single or double-inset pass door/s
- Full height hinged door

#### Operating systems

- Manual as standard

#### *Electric operation*

- Semi automatic as optional
- Optional as fully automatic

#### Sealing pressure

- 1,5 kN/m (manual)
- Semi automatic kN/m set by means of built-in micro processor

#### Track

- Aluminum / steel, standard in RAL 9010

#### Rollers

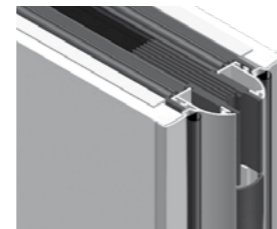
- Maximum panel weight 500 kg

#### Special elements (for example corner, glass, T elements)

- Optional

#### Environmental conditions

- Suitable for indoor use



### Type Select 100U

#### Dimensions

- Element thickness 102 mm
- Maximum element width 1260 mm
- Maximum element height 12000 mm
- Special dimensions on request

#### Frame Construction

- Self-supporting aluminum / steel frame construction

#### Cover boards

- High-quality E1-quality chipboard, 16 mm, free-floating
- Optional*
- FSC, MDF, waterproof, fire retardant

#### Sound insulation laboratory value according to DIN and ISO 10140-2

- Sound insulation from 41 to 53 dB

#### Weights

- 40 - 50 kg / m<sup>2</sup>

#### Vertical profiles

- Conical clear anodized aluminum profiles
- With double inner rubber seal profiles and integrated magnetic strip

#### Vertical connection between elements

- Type U: With wall closed, approx 5mm visible aluminum profiles

#### Horizontal connection against head track and finished floor

- Black anodized aluminum pressure bars with double rubbers to compensate for uneven floor surface
- To accommodate structural deviations/deflection up to **40 mm**
- Double pressure bars are available to compensate for structural deviations/deflection up to **80 mm**.

#### Fire rating

- F30 and F60 minutes, with and without a door

#### Pass doors

- Single or double-inset pass door/s
- Full height hinged door

#### Operating systems

- Semi automatic as standard
- Electric operation*
- Optional as manual
- Optional as fully automatic

#### Sealing pressure

- 2 kN/m (adjustable)
- Semi automatic kN/m set by means of built-in micro processor

#### Track

- Aluminum / steel, standard in RAL 9010

#### Rollers

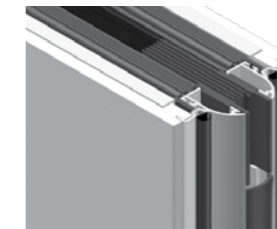
- Maximum panel weight 800 kg

#### Special elements (for example corner, glass, T elements)

- Optional

#### Environmental conditions

- Suitable for indoor use



### Type Select 100K/A

#### Dimensions

- Element thickness 102 mm
- Maximum element width 1260 mm
- Maximum element height 12000 mm
- Special dimensions on request

#### Frame Construction

- Self-supporting aluminum / steel frame construction

#### Cover boards

- High-quality E1-quality chipboard, 16 mm, free-floating
- Optional*
- FSC, MDF, waterproof, fire retardant

#### Sound insulation laboratory value according to DIN and ISO 10140-2

- Sound insulation from 41 to 53 dB

#### Weights

- 40 - 50 kg/m<sup>2</sup>

#### Vertical profiles

- Conical clear anodized aluminum profiles
- With double inner rubber seal profiles and integrated magnetic strip

#### Vertical connection between elements

- Type K: With wall closed, no visible aluminum profiles, joint between boards approx. 4 mm

#### Horizontal connection against head track and finished floor

- Black anodized aluminum pressure bars with double rubbers to compensate for uneven floor surface
- To accommodate structural deviations/deflection up to **40 mm**
- Double pressure bars are available to compensate for structural deviations/deflection up to **80 mm**.

#### Fire rating

- F30 and F60 minutes, with and without a door

#### Pass doors

- Single or double-inset pass door/s
- Full height hinged door

#### Operating systems

- Semi automatic as standard
- Electric operation*
- Optional as manual
- Optional as fully automatic

#### Sealing pressure

- 2 kN/m (adjustable)
- Semi automatic kN/m set by means of built-in micro processor

#### Track

- Aluminum / steel, standard in RAL 9010

#### Rollers

- Maximum panel weight 800 kg

#### Special elements (for example corner, glass, T elements)

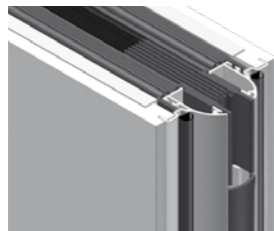
- Optional

#### Environmental conditions

- Suitable for indoor use

A = Type K/A: With wall closed, no visible aluminum profiles, joint between boards approx. 2 mm

## Continuation element connections and technical characteristics



### Type Select 110K/A

#### Dimensions

- Element thickness 110 mm
- Maximum element width 1260 mm
- Maximum element height 12000 mm
- Special dimensions on request

#### Frame Construction

- Self-supporting aluminum / steel frame construction

#### Cover boards

- High-quality E1-quality chipboard, 19 mm, free-floating
- Optional*
- FSC, MDF, waterproof, fire retardant

#### Sound insulation laboratory value according to DIN and ISO 10140-2

- Sound insulation from 54 to 57 dB

#### Weights

- 52 - 57 kg / m<sup>2</sup>

#### Vertical profiles

- Conical clear anodized aluminum profiles
- With double inner rubber seal profiles and integrated magnetic strip

#### Vertical connection between elements

- Type K: With wall closed, no visible aluminum profiles, joint between boards approx. 4 mm

#### Horizontal connection against head track and finished floor

- Black anodized aluminum pressure bars with double rubbers to compensate for uneven floor surface
- To accommodate structural deviations/deflection up to **40 mm**
- Double pressure bars are available to compensate for structural deviations/deflection up to **80 mm**.

#### Fire rating

- F30 and F60 minutes, with and without a door

#### Pass doors

- Single or double-inset pass door/s
- Full height hinged door

#### Operating systems

- Semi automatic as standard
- Electric operation*
- Optional as manual
- Optional as fully automatic

#### Sealing pressure

- 2 kN/m (adjustable)
- Semi automatic kN/m set by means of built-in micro processor

#### Track

- Aluminum / steel, standard in RAL 9010

#### Rollers

- Maximum panel weight 800 kg

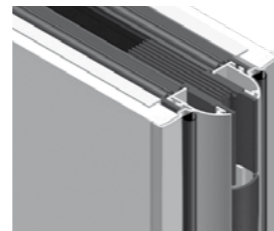
#### Special elements (for example corner, glass, T elements)

- Optional

#### Environmental conditions

- Suitable for indoor use

A = Type K/A: With wall closed, no visible aluminum profiles, joint between boards approx. 2 mm



### Type Select 110U

#### Dimensions

- Element thickness 110 mm
- Maximum element width 1260 mm
- Maximum element height 12000 mm
- Special dimensions on request

#### Frame Construction

- Self-supporting aluminum / steel frame construction

#### Cover boards

- High-quality E1-quality chipboard, 19 mm, free-floating
- Optional*
- FSC, MDF, waterproof, fire retardant

#### Sound insulation laboratory value according to DIN and ISO 10140-2

- Sound insulation from 54 to 57 dB

#### Weights

- 52 - 57 kg / m<sup>2</sup>

#### Vertical profiles

- Conical clear anodized aluminum profiles
- With double inner rubber seal profiles and integrated magnetic strip

#### Vertical connection between elements

- Type U: With wall closed, approx 5mm visible aluminum profiles

#### Horizontal connection against head track and finished floor

- Black anodized aluminum pressure bars with double rubbers to compensate for uneven floor surface
- To accommodate structural deviations/deflection up to **40 mm**
- Double pressure bars are available to compensate for structural deviations/deflection up to **80 mm**.

#### Fire rating

- F30 and F60 minutes, with and without a door

#### Pass doors

- Single or double-inset pass door/s
- Full height hinged door

#### Operating systems

- Semi automatic as standard
- Electric operation*
- Optional as manual
- Optional as fully automatic

#### Sealing pressure

- 2 kN/m (adjustable)
- Semi automatic kN/m set by means of built-in micro processor

#### Track

- Aluminum / steel, standard in RAL 9010

#### Rollers

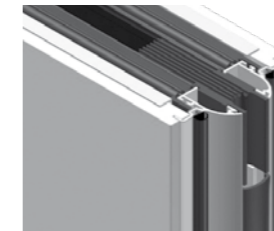
- Maximum panel weight 800 kg

#### Special elements (for example corner, glass, T elements)

- Optional

#### Environmental conditions

- Suitable for indoor use



### Type Select 120K/A

#### Dimensions

- Element thickness 120 mm
- Maximum element width 1260 mm
- Maximum element height 12000 mm
- Special dimensions on request

#### Frame Construction

- Self-supporting aluminum / steel frame construction

#### Cover boards

- High-quality E1-quality chipboard, 19 mm, free-floating
- Optional*
- FSC, MDF, waterproof, fire retardant

#### Sound insulation laboratory value according to DIN and ISO 10140-2

- Sound insulation from 59 dB

#### Weights

- 60 kg / m<sup>2</sup>

#### Vertical profiles

- Conical clear anodized aluminum profiles
- With double inner rubber seal profiles and integrated magnetic strip

#### Vertical connection between elements

- Type K: With wall closed, no visible aluminum profiles, joint between boards approx. 4 mm

#### Horizontal connection against head track and finished floor

- Black anodized aluminum pressure bars with double rubbers to compensate for uneven floor surface
- To accommodate structural deviations/deflection up to **40 mm**
- Double pressure bars are available to compensate for structural deviations/deflection up to **80 mm**

#### Fire rating

- F30 and F60 minutes, with and without a door

#### Pass doors

- Single or double-inset pass door/s
- Full height hinged door

#### Operating systems

- Semi automatic as standard
- Electric operation*
- Optional as manual
- Optional as fully automatic

#### Sealing pressure

- 2 kN/m (adjustable)
- Semi automatic kN/m set by means of built-in micro processor

#### Track

- Aluminum / steel, standard in RAL 9010

#### Rollers

- Maximum panel weight 800 kg

#### Special elements (for example corner, glass, T elements)

- Optional

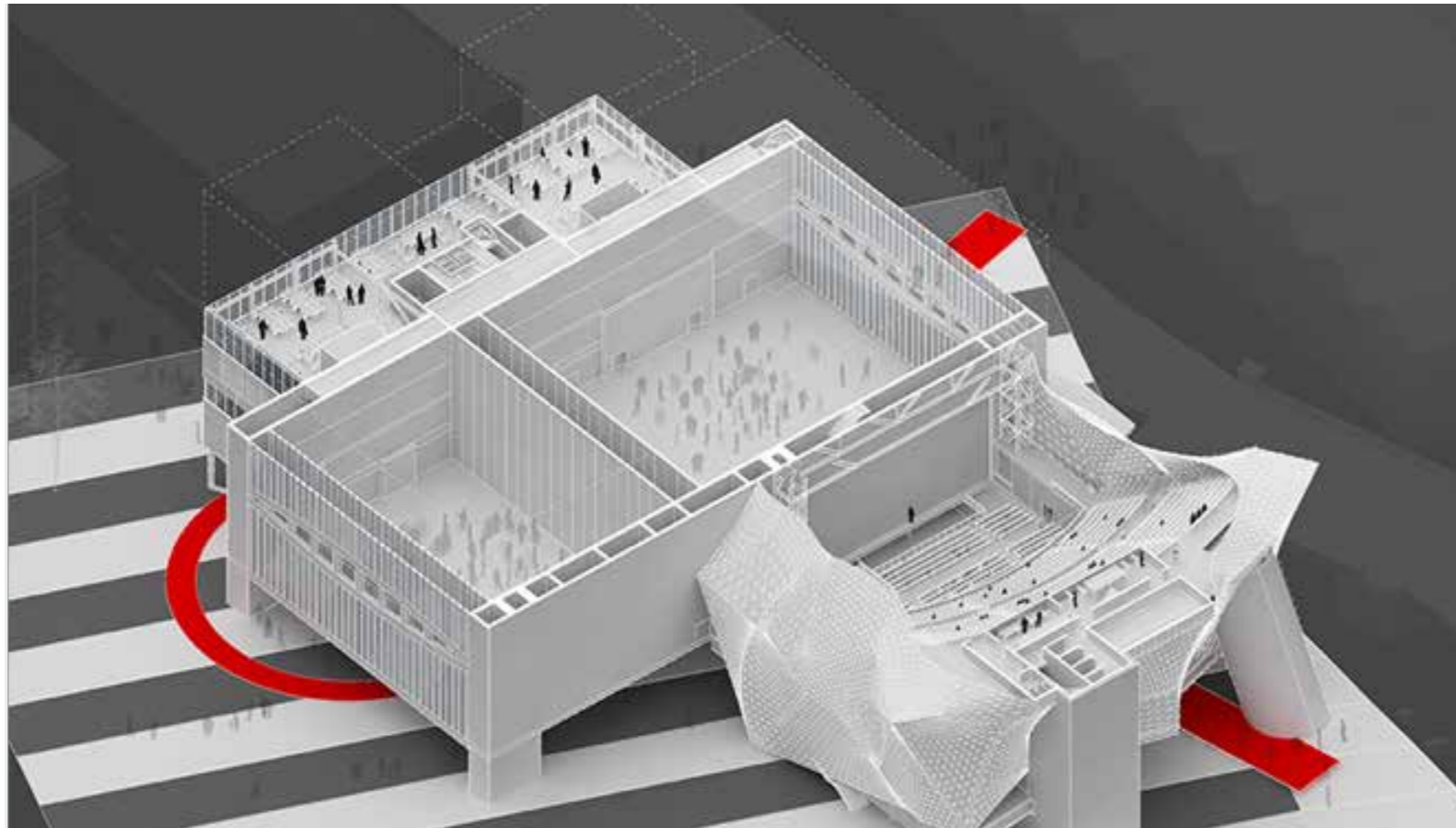
#### Environmental conditions

- Suitable for indoor use

A = Type K/A: With wall closed, no visible aluminum profiles, joint between boards approx. 2 mm

Type 200K  
Ask for the possibilities





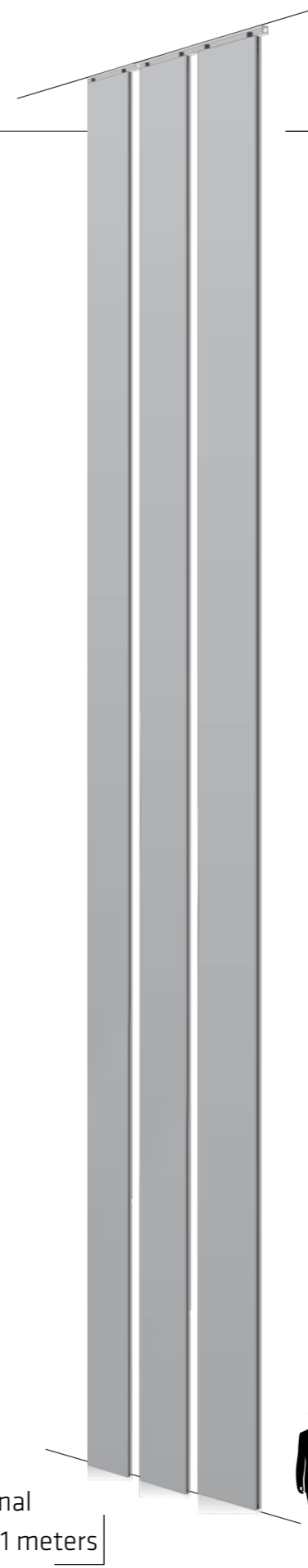
## Unprecedented **beauty**

The renowned architectural practice OMA Architects, known for many award-winning projects, designed a truly beautiful cultural center for the City of Manchester in which a multi-disciplinary arts centre, music venue and theatre all come together.

Several international moveable folding wall manufacturers were invited to put forward their design for two unique and exceptionally large moveable folding walls, the like of which

have not been produced/installed anywhere else in the world. Ultimately, and after many months of cooperation, Multiwal were awarded the contract to provide the final design for production and assembly together with the OMA Architects design team.

Exceptional height, 21 meters



## Select 200K

The demands were extremely high. Not only for the technical performance requirements but also for the strength of construction also required. Due to the extreme dimensions (a height of 21 meters!), the requirements for the panel construction, wind loadings, sound reduction and sound absorption were all of the highest level.

### Method of construction

In order to meet these strict performance requirements, Multiwal facilitated the calculations required to simulate the anticipated wind loadings and stresses in order to arrive at a stable panel construction. By combining the finished stable panel construction with the application of the Multi>Electric system, we could then ensure optimum performance and quality.

### Rollers and rails

In order to be able to easily move the panels, each weighing close to 4,000 kg, a specially designed track and trolley combination has also been developed. Panels can easily be moved and parked when not in use, as a result of a number of special features within the track system that simplify parking techniques for the client.

### Acoustic performance

The design called for a high level of performance. With a moveable folding wall area of 2 x 600 m<sup>2</sup>, incorporating several sets of double pass doors, a practical value of 55 dB had to be achieved. After our design was finalised, Multiwal commissioned acoustic tests using the accredited ITA Wiesbaden acoustic laboratory. We achieved a result of 77 dB in laboratory conditions, with two walls incorporating four sets of double pass doors and with absorption panels applied.

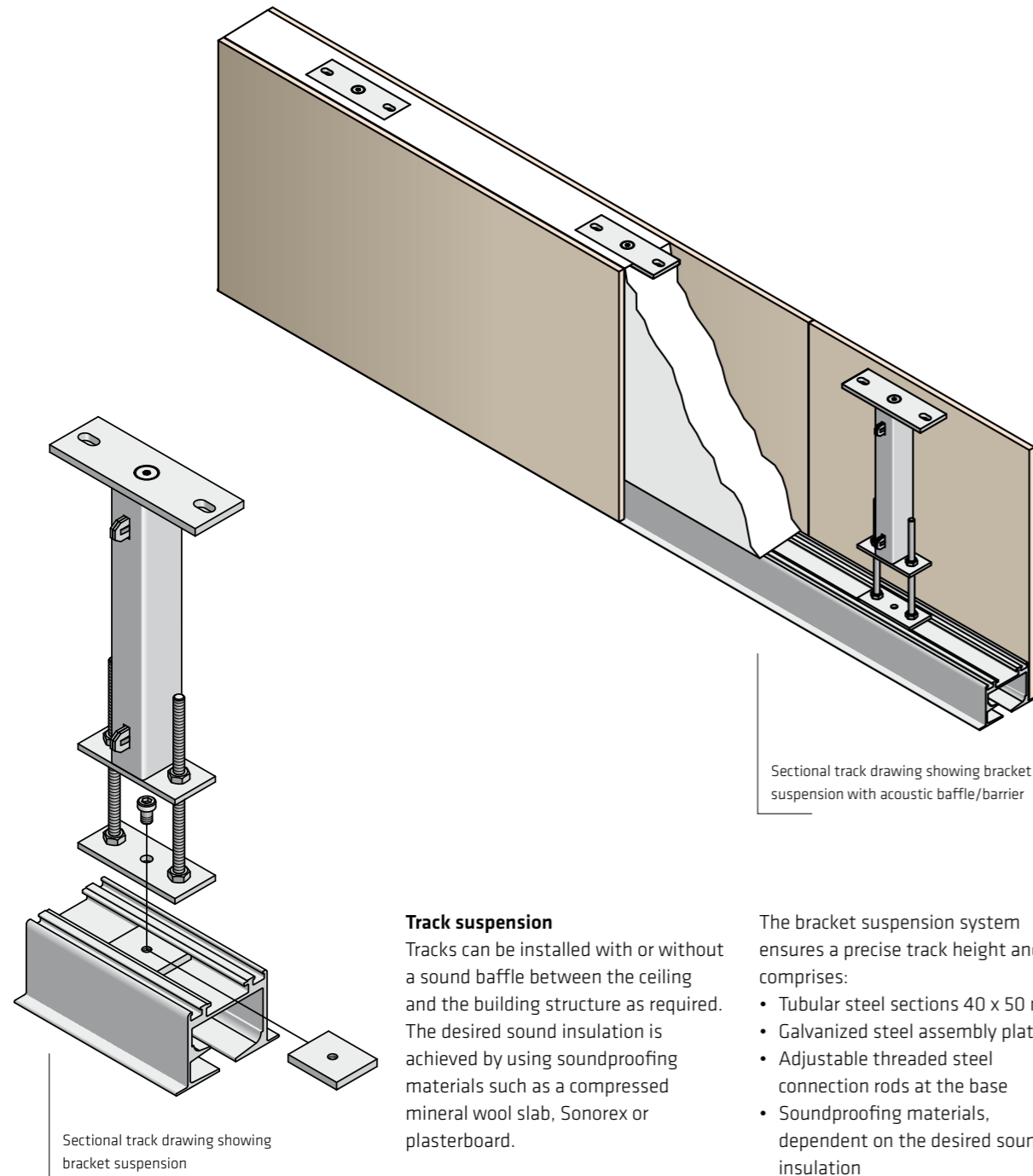
### Sound absorption

The walls not only serve to separate two halls but also have an important function as sound absorption fields for the large music hall. The fitted absorption panels ensure good acoustics not only when the walls are in the room, but also when they are positioned along the side walls in the parked position.

### A good example of Multiwal design!



# Track and Track suspension

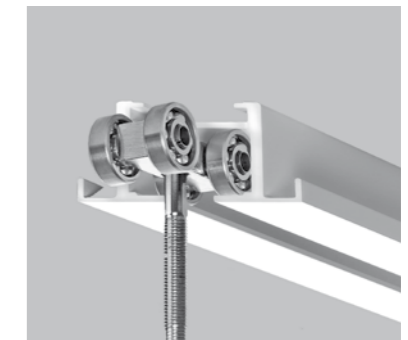
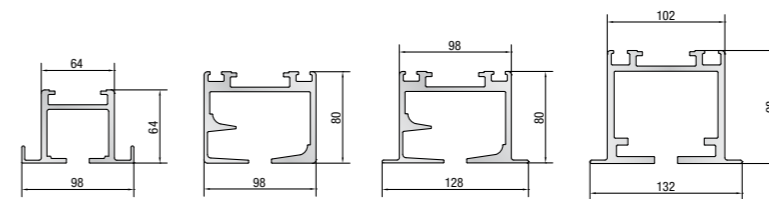


The bracket suspension system ensures a precise track height and comprises:

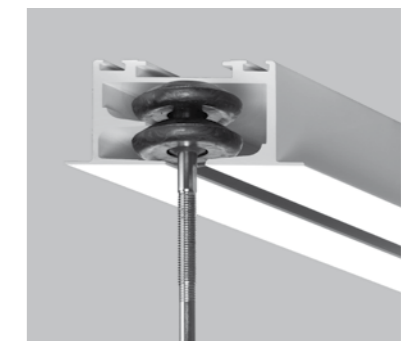
- Tubular steel sections 40 x 50 mm
- Galvanized steel assembly plates
- Adjustable threaded steel connection rods at the base
- Soundproofing materials, dependent on the desired sound insulation

## Easy to use right down to the smallest detail

Thanks to the well-balanced construction of the track and the precision running gear, Multiwal moveable walls can easily be moved by hand. Based on years of experience, Multiwal has developed a number of silent track systems that can be used for all of its moveable walls. Multiwal has three standard types, each with its own roller technology. In addition to the three standard types, special bespoke track systems can be developed upon request.



Track type MA

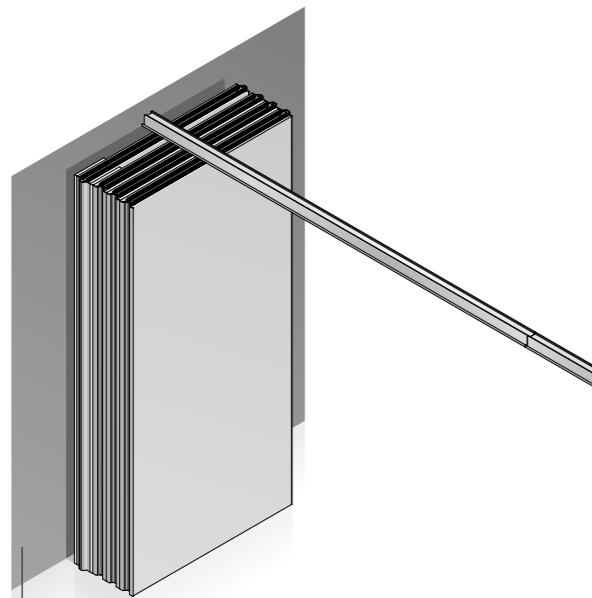


Track type MR-1 with ceiling support flange  
Track type MR without ceiling support flange



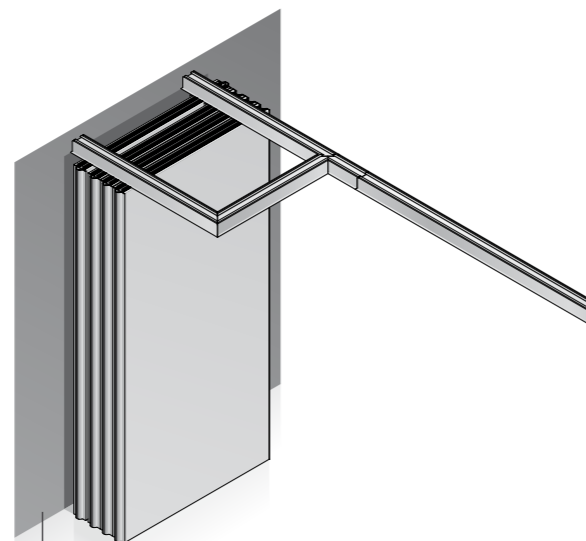
Track type MR-S

# Parking options



## Single suspension point, MA track

Each panel is suspended by one centrally fixed, quadruple surface, bearing roller. This enables panels to be easily moved to the parking position without the use of an auxiliary track.



## Double suspension point, MR/MR-1 and MR-S track

Each panel is suspended by two bearing rollers, which enables it to be moved in every required direction to the parking position using an auxiliary track.

# Special track systems

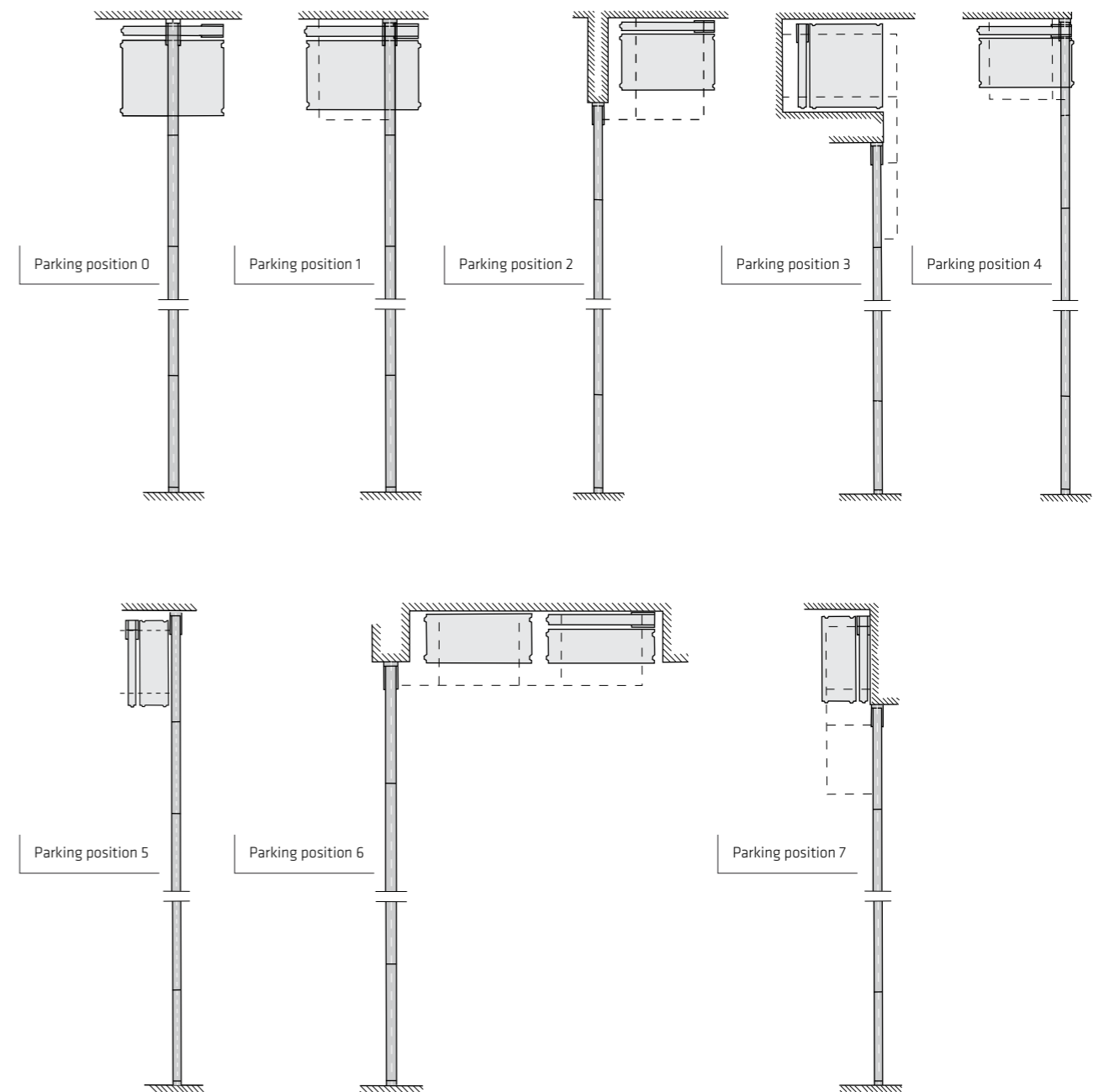
We use special ROB track systems for installing high or extremely heavy walls, for example. These rails have fully automatic switches, so that you can effortlessly move and park each panel.

There is no standard when using these track systems. We design and produce the track systems to suit your project. This way we guarantee that you get the right and most appropriate track system for your project.



## Customised parking

The eight most common standard parking positions are shown below. The Multiwall track constructions allow a variety of possibilities to achieve practically all imaginable parking solutions.





# Safety first

Multiwal considers the safety of you, your staff and business data and equipment to be vitally important. That is why all of our moveable wall systems are also available in fire resistant and fire proof models.

Effective fire protection is essential to Multiwal. The effects of fire can be disastrous for your organisation. Multiwal is dedicated to providing effective fire safety systems that limit smoke and fire damage as much as possible for the safety of everyone in the building. That is why Multiwal has developed moveable walls with special fire-retardant finishes. Various fire-retardant types are possible.

Safety is our top priority!

**Fire resistance 30 and/or 60 minutes.**

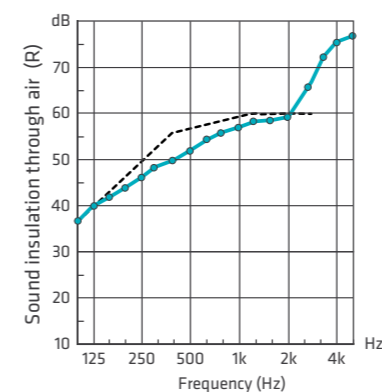


Certificate present

# Silence to order

Efficient arrangement of available space involves not only a visual barrier but also a good sound insulation. Multiwal has carefully considered these requirements, developing special components, a technically flawless construction and first class quality control procedures. Our moveable walls have been tested by TNO Technical Physical Service at Delft University of Technology at ITA and Fraunhofer-Institut in Germany. Soundproofing up to 59 dB is possible. A level that is every bit as good as the most modern fixed walls.

- 20 dB Whispering
- 30 dB Moderate traffic noise
- 40 dB Normal conversation
- 50 dB Loud conversation
- 60 dB Very loud conversation
- 70 dB Mechanical sound (vacuum cleaner)
- 120 dB Drill hammer / breaker



--- Shifted ref. clove  
—●— Octave band value





# Multi Design

The space in which we work defines the effectiveness of our thoughts and actions. Colour is a determining factor in the atmosphere and thus the mood of a space. That is why Multiwal supplies walls in a large variety of colours and finishes, so the mood of your working environment contributes to an optimal performance.

Another dimension is now added. Multi Design transforms the walls into actual works of art, with pictures and paintings of noted artists or with your own design. The wall is no longer just a partition to seal off a space; it becomes a design feature and focus of imagination.

Because Multiwal provides customised solutions, it is always better if our advisers become involved in your project as early as possible in the planning phase. In that way, we can jointly arrive at intelligent solutions for the most flexible arrangement of your space.

Multiwal products make it possible to work efficiently in every space in which flexibility and stylishness are combined. Whether it involves great heights, different levels in ceilings and floors or unusually-shaped spaces, the great flexibility of Multiwal moveable walls makes it possible to satisfy almost every need. Colours, sound insulation and customer-friendliness with the Multi Electric system are important factors.



# When round means round

We can also manufacture moveable folding walls to create a complete circular space. We do this with individual radius panels which can then be located into our unique radius track system. At Multiwal, the wall is actually manufactured using circular panels to form a perfect circle or part of. We do not use faceted panels which is customary within the market. What makes our walls unique is that the rail construction is also circular, we produce all the components in-house. Really at Multiwal!



# Together everything is possible

Do you want a modest, lively or exuberant wall? Multiwal moveable panel walls are not only available in different versions and a huge range of colours, but also in various materials. You can opt for a standard Melamine finish. But what about a high-grade fine veneer, HPL, your choice of textile or exclusive paneling with your favorite type of wood? You can also personalise your walls further using graphics and our Multi Design feature, a new creative dimension to finishing your wall! You can have your own photo or image printed onto different types of walls. Or make beautiful walls of your walls, with photos and paintings by renowned photographers or classical artists. A wall is no longer 'just' a wall, but adds a new dimension to a space.

Do you need a space where you often have to conduct confidential conversations? The Multiwal moveable folding walls are always provided with the acoustic performance required. It is also possible to provide your walls with special acoustic panels to guarantee the correct sound absorption performance is also achieved. These panels are ideal for music venues or large conference rooms to ensure the music then sounds exactly as it is intended, and in a conference room you can still hear the speaker when seated in the last row.

We will gladly take you into the world of wall finishes and colours. In this brochure we show you only a small part of the options available. Feel free to make an appointment with us and we will provide you with tailor-made advice!



# The Berlin wall on your wall

Original photos of the Berlin wall between East and West Berlin that fell in 1989, beautifully processed onto the moveable folding wall within a five star hotel.



# Other possibilities

Or do you prefer something colourful or fun for schools?  
Or rather a mirror wall?

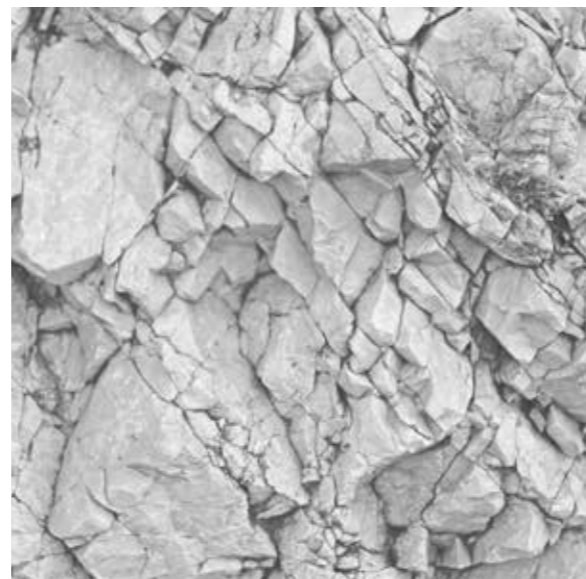
What do you get as standard with Multiwal?



# Colours

Multiwal has put together a standard selection of 36 colours especially for the Select.

Naturally, all conceivable alternative finishes and colours are available as potential optional extras. For this we refer you to our brochure Finishing in design.





# Multiwal is fully certified

## Permanent control

Multiwal designs and manufactures in-house with production facilities in the Netherlands and Germany. The application of advanced techniques are inherent to the Multiwal walls. Even after the professional installation and final inspection is completed, Multiwal remains involved with periodic inspection and servicing by a team of specialist engineers, recommended to keep your walls in optimum condition.

## Quality management

In order to assure you of our quality, Multiwal is certified to the quality management system DIN EN ISO 9001: 2015 ISO.

In addition, the following certificates are available:

- Sound insulation to DIN EN 10140-2 / 20140-3 laboratory values by international test laboratories.
- Fire protection to EN 1364-1: 1999 and EN 1634-1: 2008
- TÜV certification, endurance test, construction test ball collision test to DIN EN 60335-1, DIN EN 60335-2-103 and EK5 / TA9 16-01: 2016
- FSC certification number SG5CH-COC-050184

## FSC® certified

FSC®, The Forest Stewardship Council®, is an international organisation, founded in 1993, to promote responsible forest management. The FSC® establishes worldwide standards for forest management, with a quality mark attached to it. The basis for these standards, which are further elaborated per country or region, are the 10 FSC® principles for good forest management. If forest owners adhere to the FSC® standards, their forest can be certified. Independent inspectors monitor compliance with the rules.

## BIM service

BIM, Building Information Modeling, a digital architect platform to showcase the Multiwal moveable folding walls within the buildings overall design.

Use the download facility to integrate the BIM models from Multiwal into your design, at the start you will find a short introduction film to help you further.



# Worldwide service

Multiwal is an international company in terms of mobile partition walls with its head office in the Netherlands, production in the Netherlands and Germany and its own sales offices in France and England.

Worldwide, Multiwal advises, produces and installs moveable folding walls that create space. Whether it involves creating space in multifunctional venues, banks, schools, hotels, restaurants or offices; Multiwal moveable folding walls are extremely versatile. They offer creative freedom in every conceivable design.

## Service near by

The best service is provided locally. In addition to our own sales offices in the Netherlands, Germany, France and England, Multiwal has an extensive sales network of agents. They represent Multiwal across many different countries.



Our locations



The information in this brochure has been compiled with the utmost care. Changes in technical specifications or other information in this brochure are always reserved.



Head office:

**Multiwal B.V.**

Kleine Beer 20  
Postbus 272  
2950 AG Alblasterdam  
T +31 78 692 21 22  
E [info@multiwal.nl](mailto:info@multiwal.nl)  
I [www.multiwal.nl](http://www.multiwal.nl)

**Multiwal France**

124 rue Pasteur  
59370 Mons en Baroeul  
T +33 320 33 08 42  
F +33 320 33 96 17  
E [info@multiwal.fr](mailto:info@multiwal.fr)  
I [www.multiwal.com](http://www.multiwal.com)

**Multiwal GmbH**

Kleinrudestedter Straße 14  
99195 Großrudstedt  
T +49 362 04 55 80  
F +49 362 04 5 58 30  
E [info@multiwal.de](mailto:info@multiwal.de)  
I [www.multiwal.com](http://www.multiwal.com)

**Multiwal UK Ltd**

Unit B Rochdale Central  
Industrial Estate  
Norman Road  
OL11 4HS Rochdale  
T +44 127 349 7370  
E [info@multiwal.co.uk](mailto:info@multiwal.co.uk)  
I [www.multiwal.co.uk](http://www.multiwal.co.uk)

**[www.multiwal.co.uk](http://www.multiwal.co.uk)**

